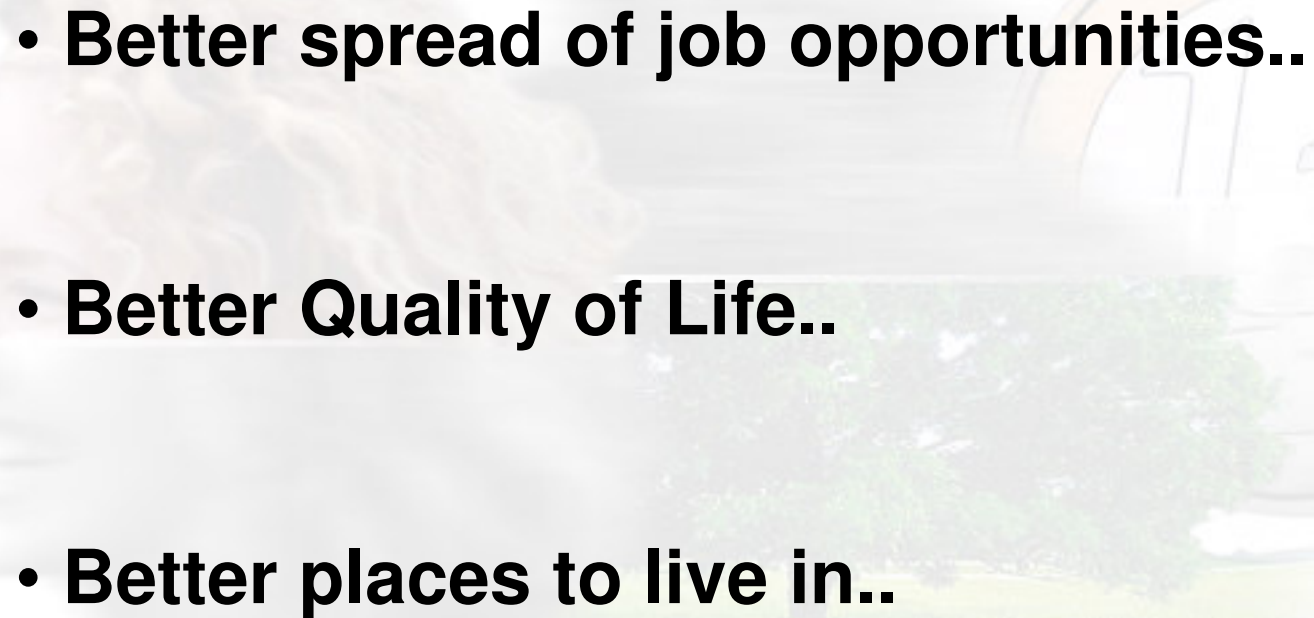


The background is a composite image. On the left, there is a profile of a woman with blonde, curly hair. In the center, there is a landscape with a large green tree in a grassy field. On the right, there is a 10 Euro coin. The text "The National Spatial Strategy" is overlaid in the center in a bold green font.

The National Spatial Strategy

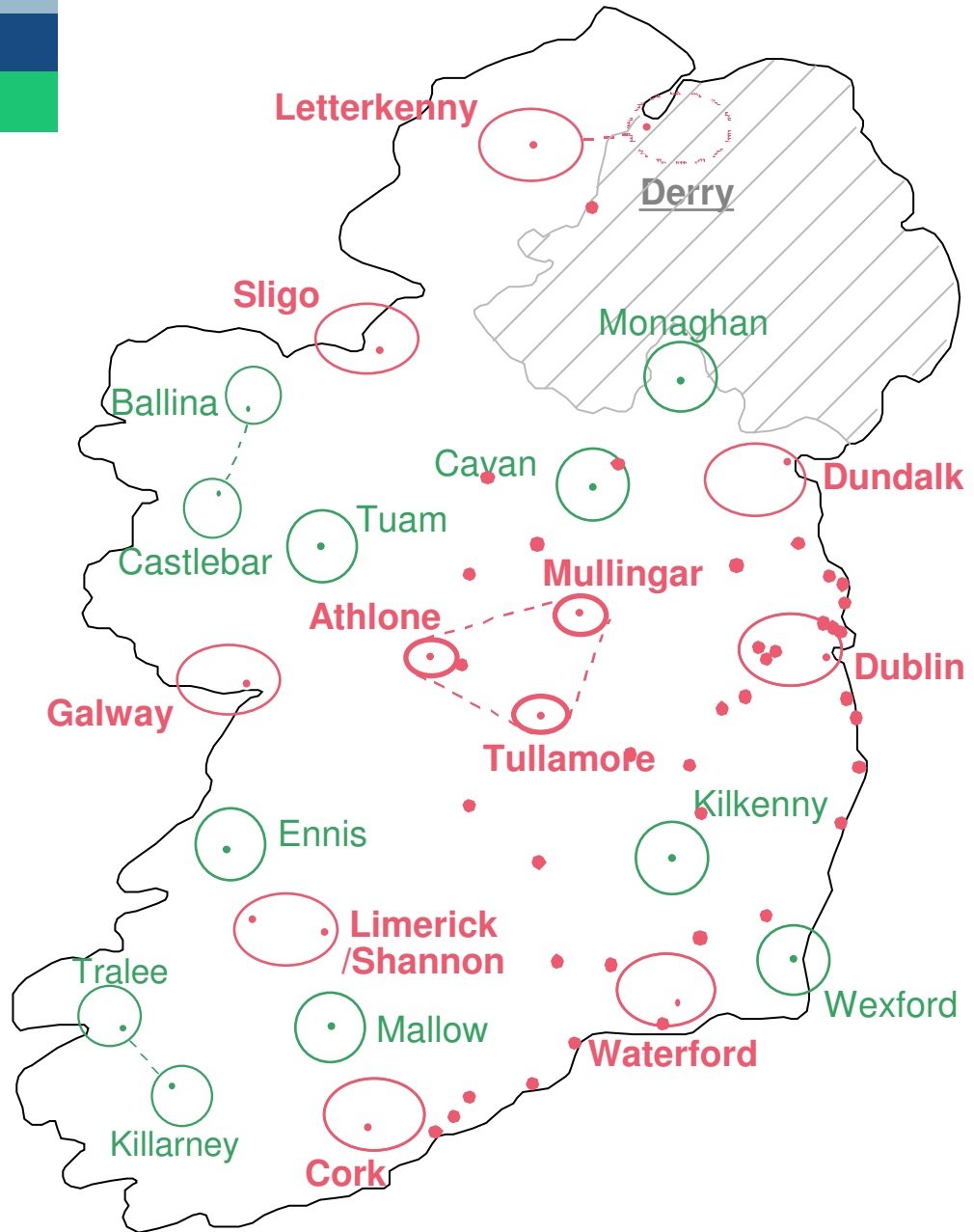
NSS Core Messages....

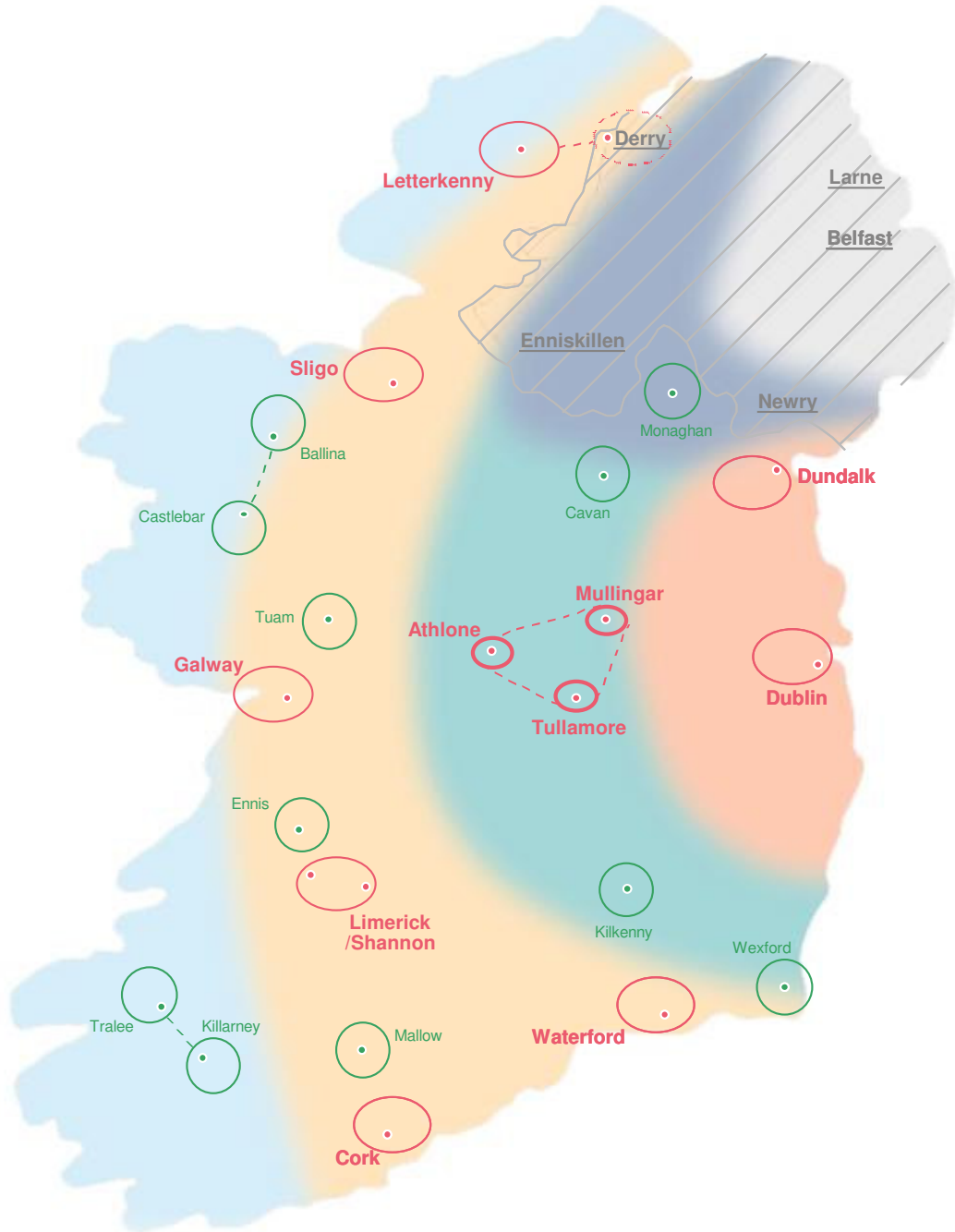
- **Better spread of job opportunities..**
 - **Better Quality of Life..**
 - **Better places to live in..**
- 
- The background of the slide is a composite image. On the left, there is a faint, grayscale profile of a woman's head with curly hair. In the center and right, there is a landscape scene with a green field, a large tree, and a rainbow arching over a body of water. On the right side, there is a circular emblem or seal. The emblem is divided into two horizontal sections. The top section is orange and contains a stylized building with a flag on top. The bottom section is white and contains a stylized tree and other architectural elements.

What the NSS will do....

- **Spatial Policy Framework..**
 - **Shape future investment..**
 - **Enhancing quality in planning..**
- 
- The background of the slide is a composite image. On the left, there is a faint, grayscale profile of a person's head facing right. In the center, there is a landscape with green trees and a body of water. On the right, there is a large, semi-transparent Euro coin, specifically a 1 Euro coin, which is partially overlapping the landscape. The coin shows the number '1' and the European Union flag.

The National Spatial Strategy



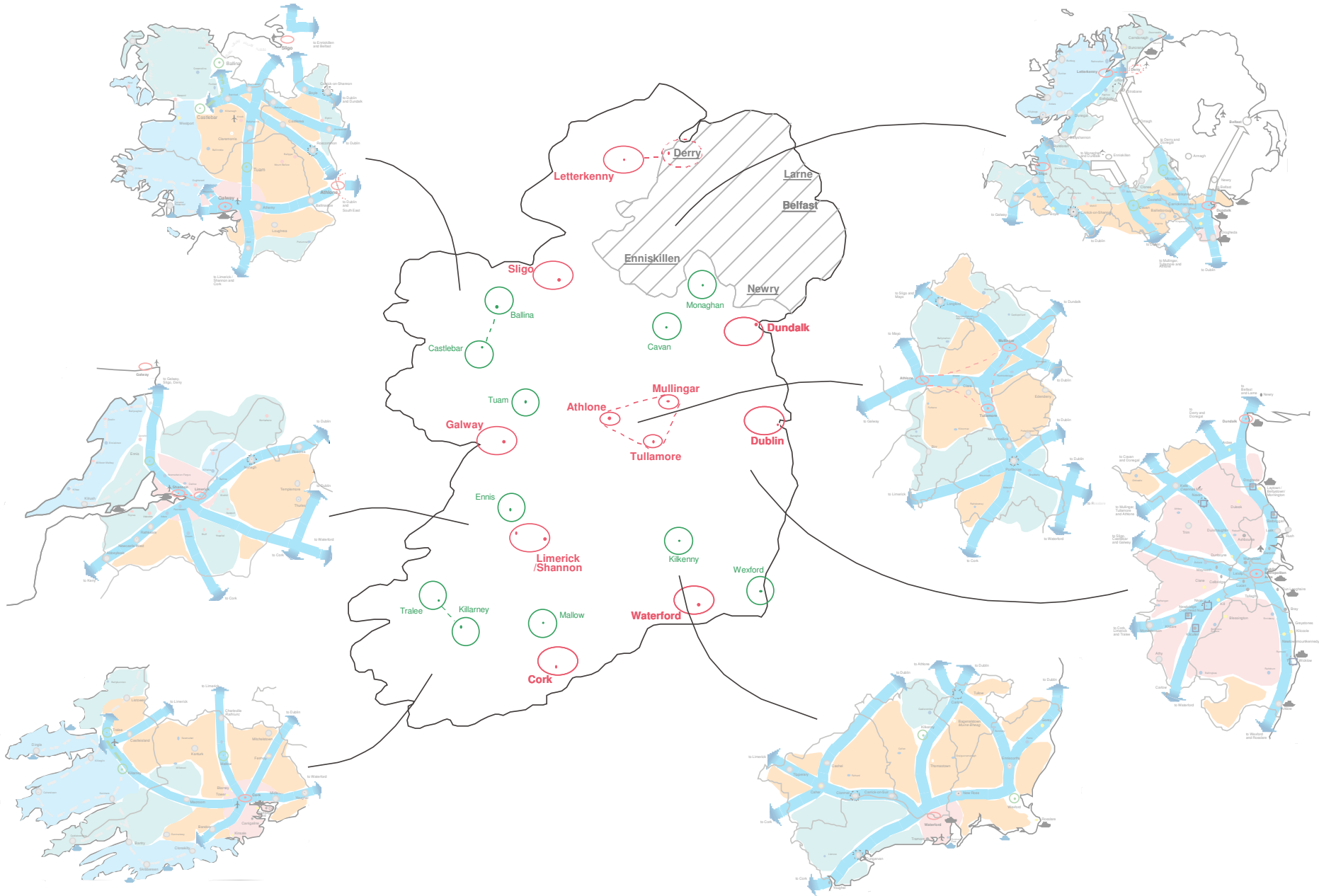


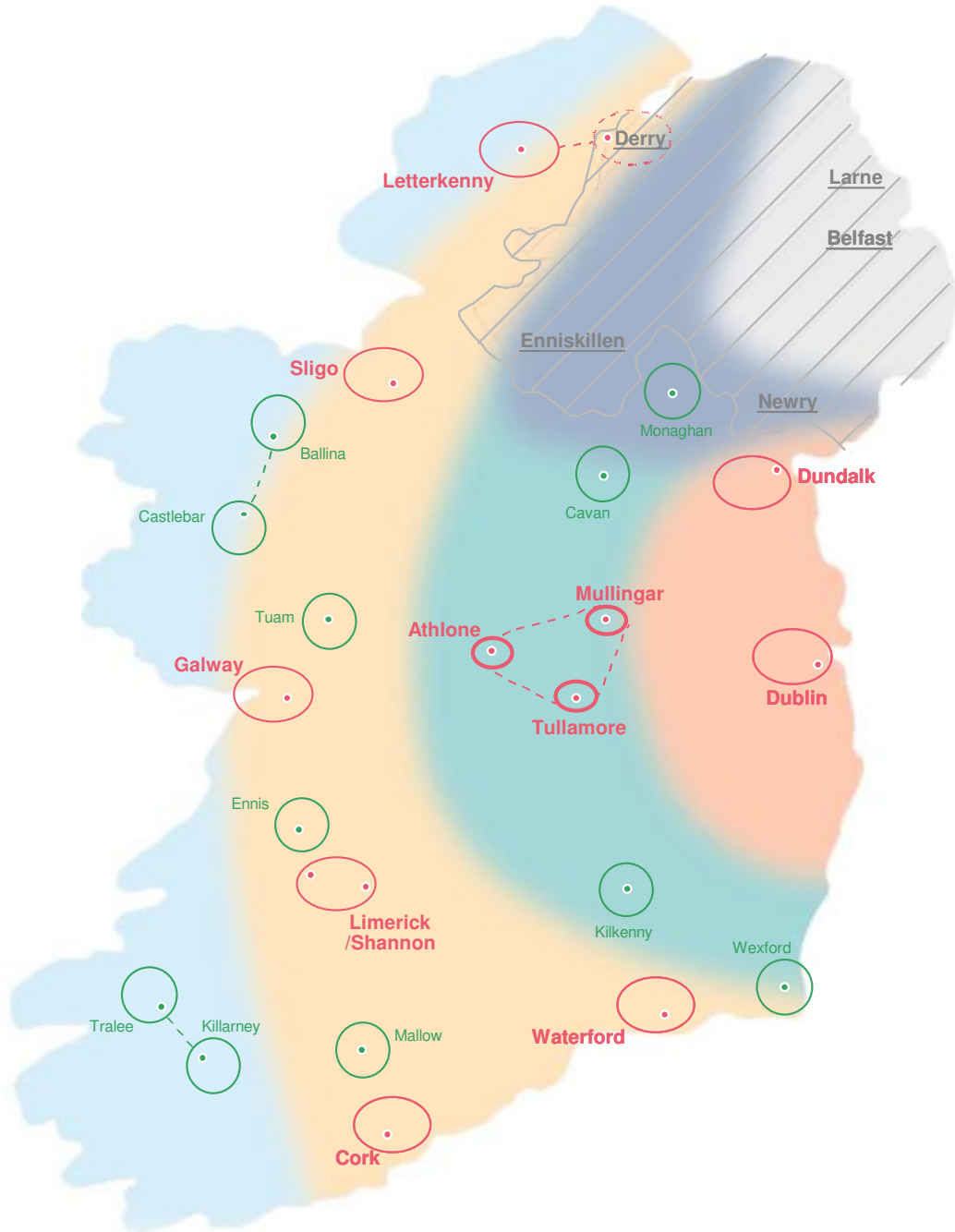
Rural Policies....

- **Rural and Urban partnership in balanced development..**
- **Strengthening rural communities..**
- **Protecting environmental qualities..**
- **Rural Settlement:**
 - **Accommodating the needs of rural communities..**
 - **Areas close to cities/main towns..**
 - **Building up the village structure..**
 - **Areas with a weaker urban structure..**

A composite background image featuring a woman's profile on the left, a landscape with a tree in the center, and a 1 Euro coin on the right. The text is overlaid on the center of the image.

The National Spatial Strategy and The Border Region



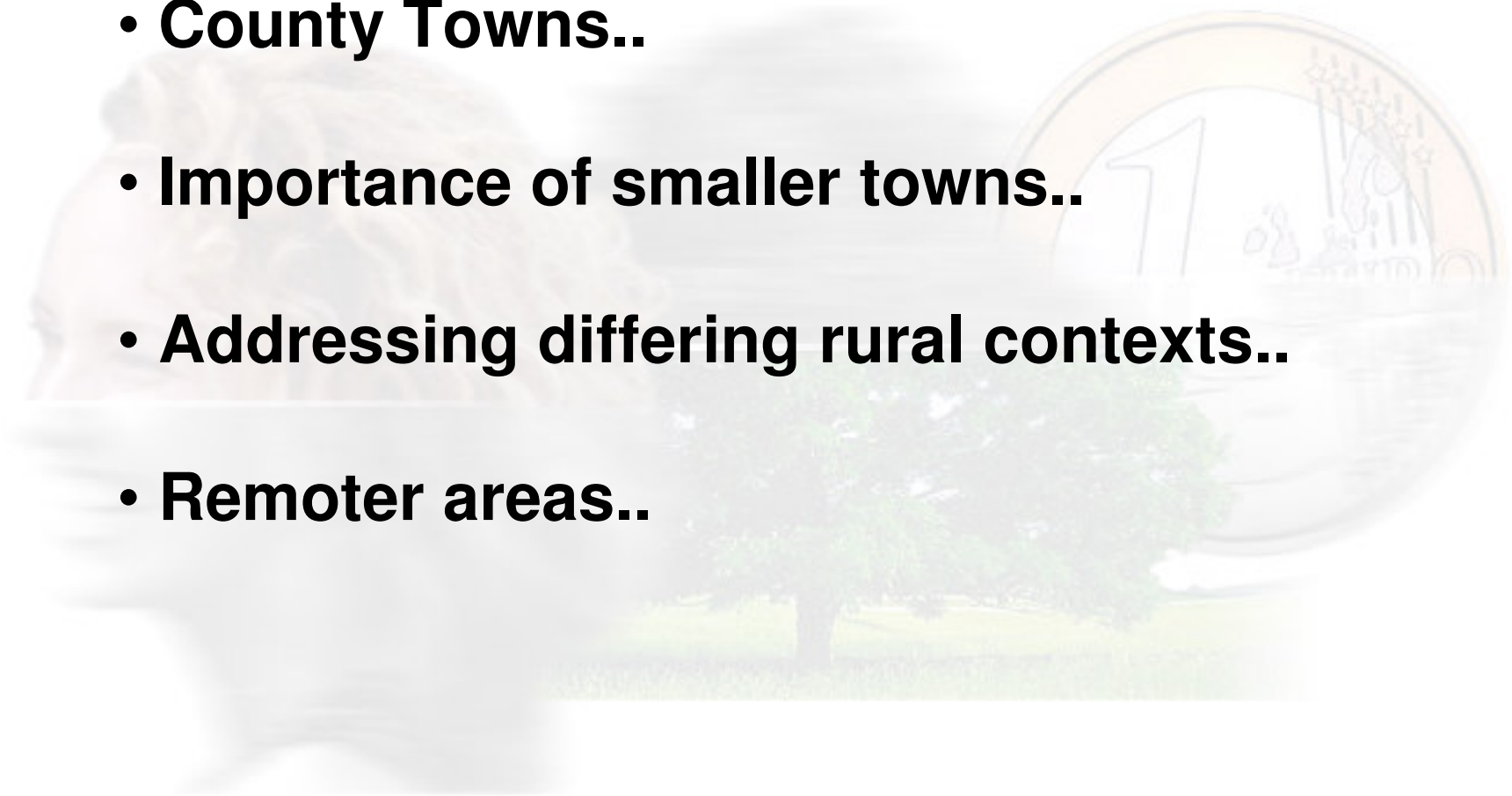


NSS and the Border Region....

- ***Co-operating***
- **Strengthening the urban structure**
- **3 out of 4 Gateways**
- **2 hubs**
- **A strategic location in all - island terms**

NSS and the Border Region....

- **County Towns..**
- **Importance of smaller towns..**
- **Addressing differing rural contexts..**
- **Remoter areas..**



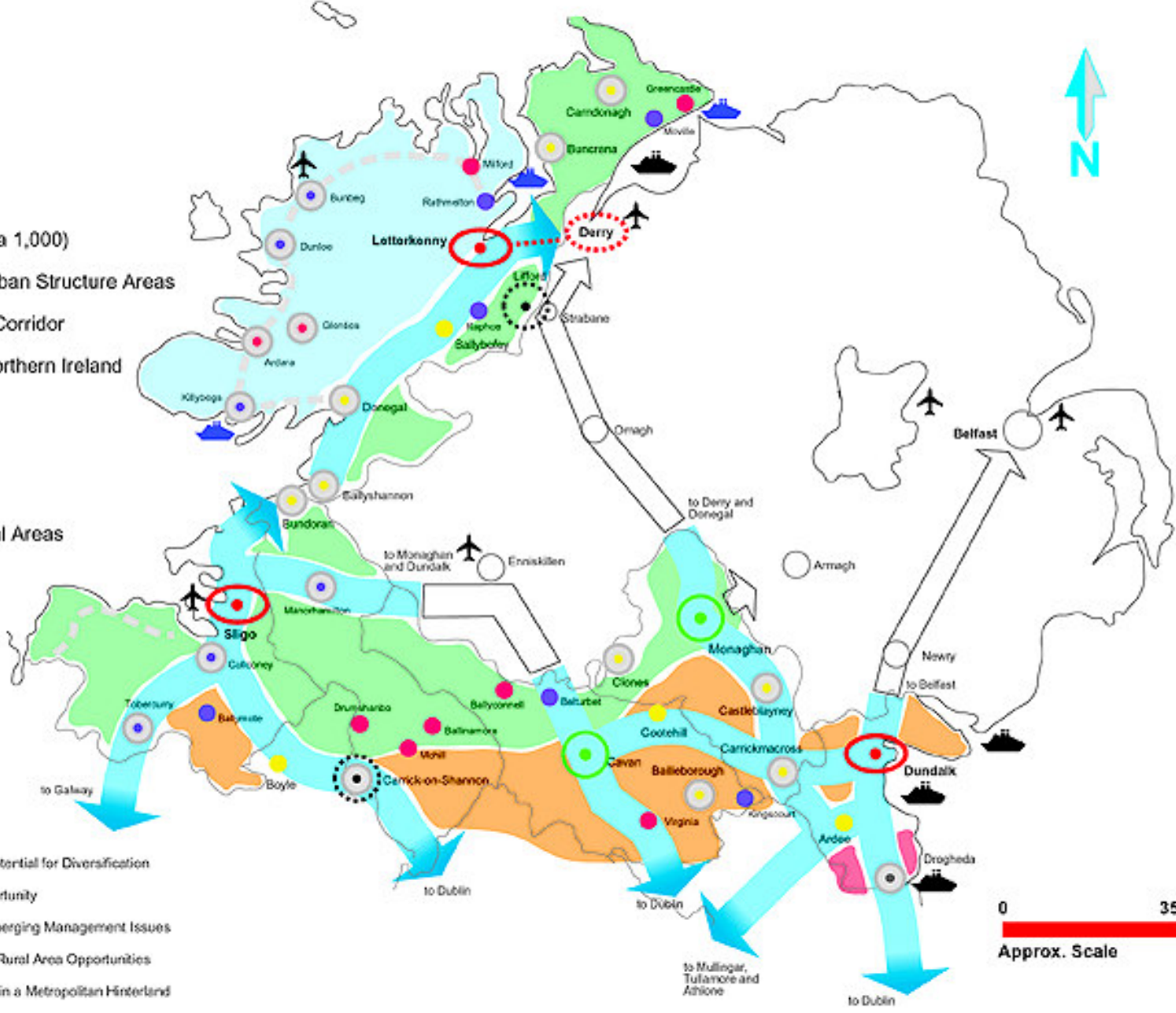
Linked Gateway....

- **European examples..**
- **Complementary Development Strategies..**
- **Local Authority partnership..**
- **Joint Development Groups..**
- **DoELG support..**

Border



- Gateway
- Hub
- County Town
- <5,000 Town
- 1,500 - 5,000 Town
- Urban Centres (circa 1,000)
- Centres in Weak Urban Structure Areas
- National Transport Corridor
- Key Corridor into Northern Ireland
- Airport
- Transit Port
- Major Fishing Port
- Access to Peripheral Areas



- Rural Areas with Strong Potential for Diversification
- Urban Strengthening Opportunity
- Diversifying Areas — Emerging Management Issues
- Village Strengthening and Rural Area Opportunities
- Strategic Rural Assets within a Metropolitan Hinterland





The National Spatial Strategy Implementation

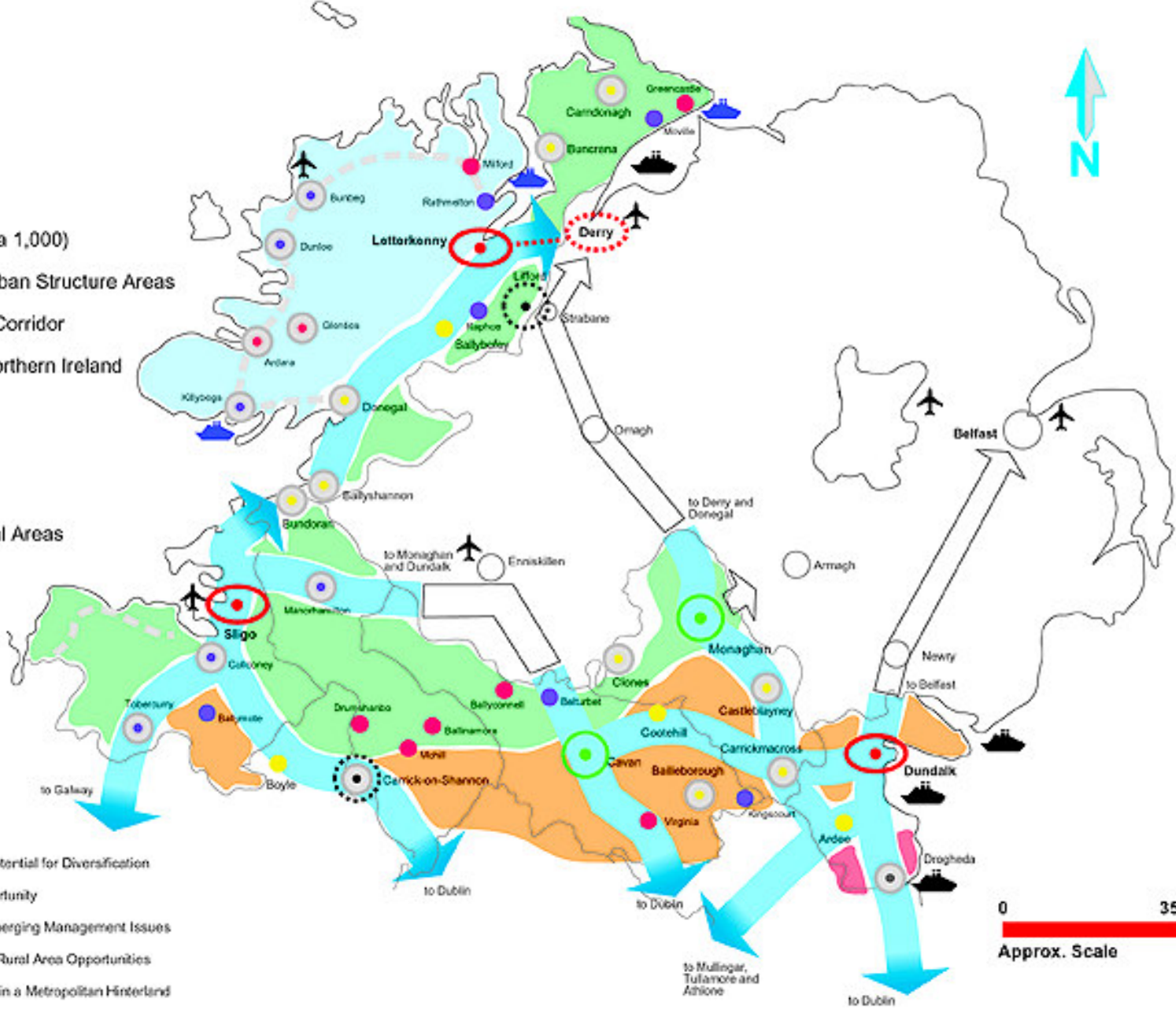
Implementation....

- **Minister for Environment and Local Government..**
- **Regional Planning Guidelines..**
- **Gateways and Hubs..**
- **Integration into other policies and programmes..**
- **Mid Term Review of NDP..**
- **Within one year..**
- **Within five years..**

Border



-  Gateway
-  Hub
-  County Town
-  <5,000 Town
-  1,500 - 5,000 Town
-  Urban Centres (circa 1,000)
-  Centres in Weak Urban Structure Areas
-  National Transport Corridor
-  Key Corridor into Northern Ireland
-  Airport
-  Transit Port
-  Major Fishing Port
-  Access to Peripheral Areas



-  Rural Areas with Strong Potential for Diversification
-  Urban Strengthening Opportunity
-  Diversifying Areas — Emerging Management Issues
-  Village Strengthening and Rural Area Opportunities
-  Strategic Rural Assets within a Metropolitan Hinterland

