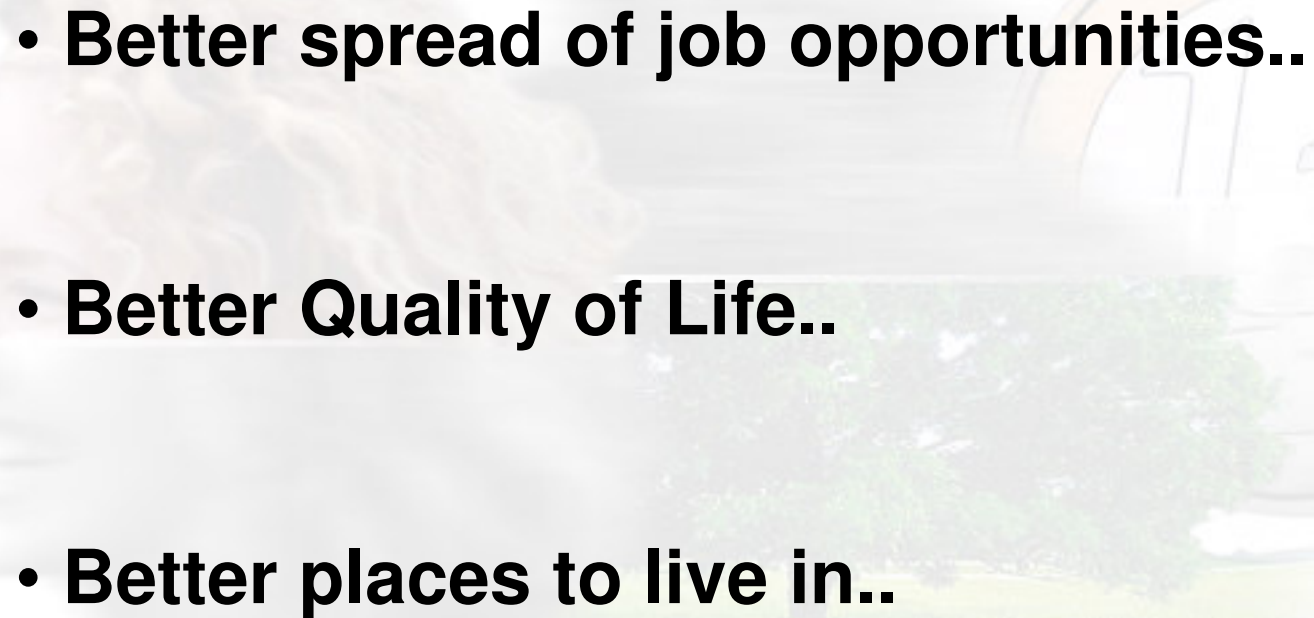


The background is a composite image. On the left, there is a profile of a woman with blonde, curly hair. In the center, there is a landscape with a large green tree in a grassy field. On the right, there is a 10 Euro coin. The text 'The National Spatial Strategy' is overlaid in the center in a bold green font.

The National Spatial Strategy

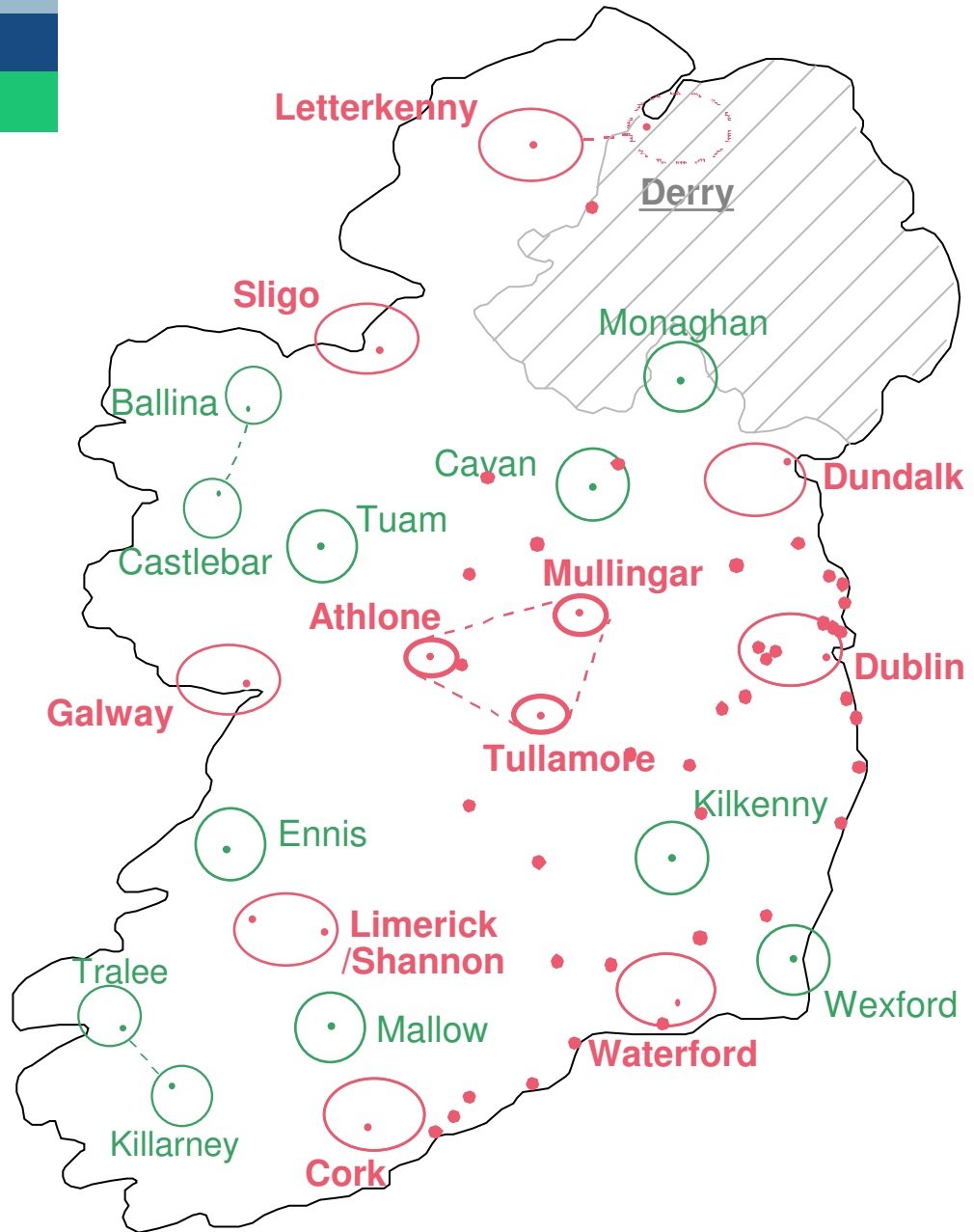
NSS Core Messages....

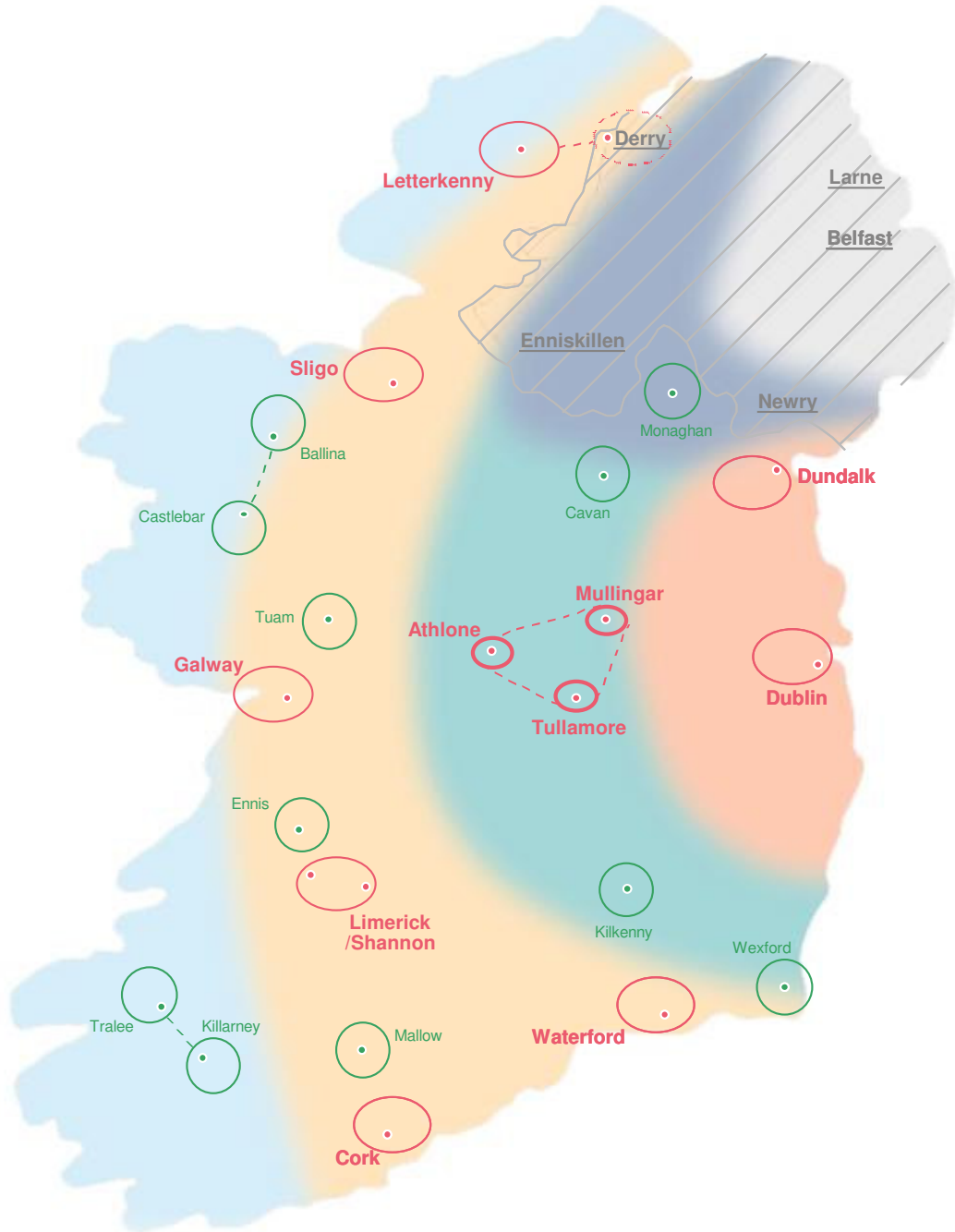
- **Better spread of job opportunities..**
 - **Better Quality of Life..**
 - **Better places to live in..**
- 
- The background of the slide is a composite image. On the left, there is a faint, grayscale profile of a woman's head with curly hair. In the center, a landscape scene shows a green field, a large tree, and a rainbow arching across the sky. On the right, there is a circular emblem with a yellow and orange border, containing a stylized building and trees.

What the NSS will do....

- **Spatial Policy Framework..**
 - **Shape future investment..**
 - **Enhancing quality in planning..**
- 
- The background of the slide is a composite image. On the left, there is a faint, grayscale profile of a person's head facing right. In the center and right, there is a landscape with green trees and a body of water. Overlaid on the right side of the landscape is a large, semi-transparent Euro coin, specifically a 1 Euro coin, showing the number '1' and the European Union flag.

The National Spatial Strategy



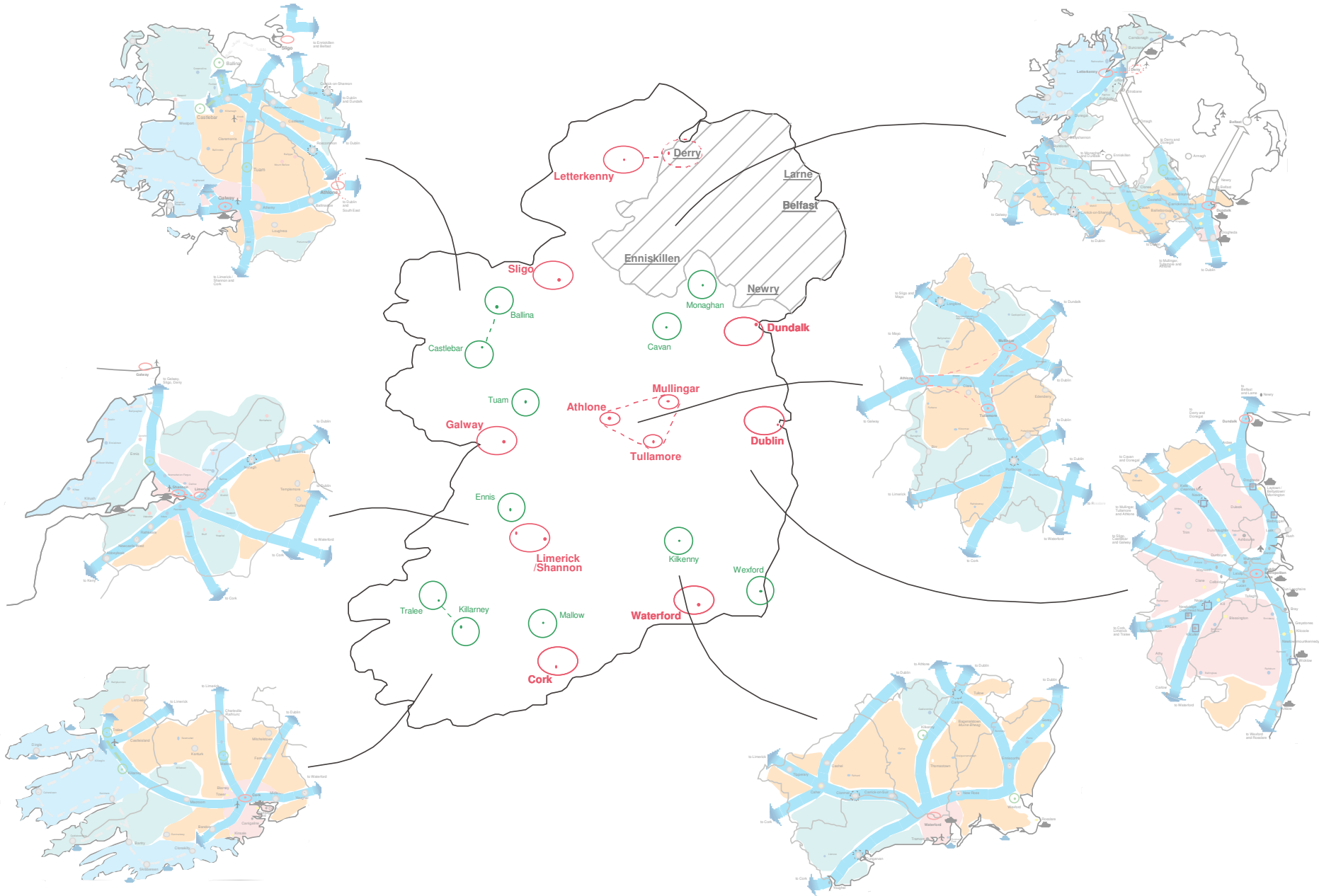


Rural Policies....

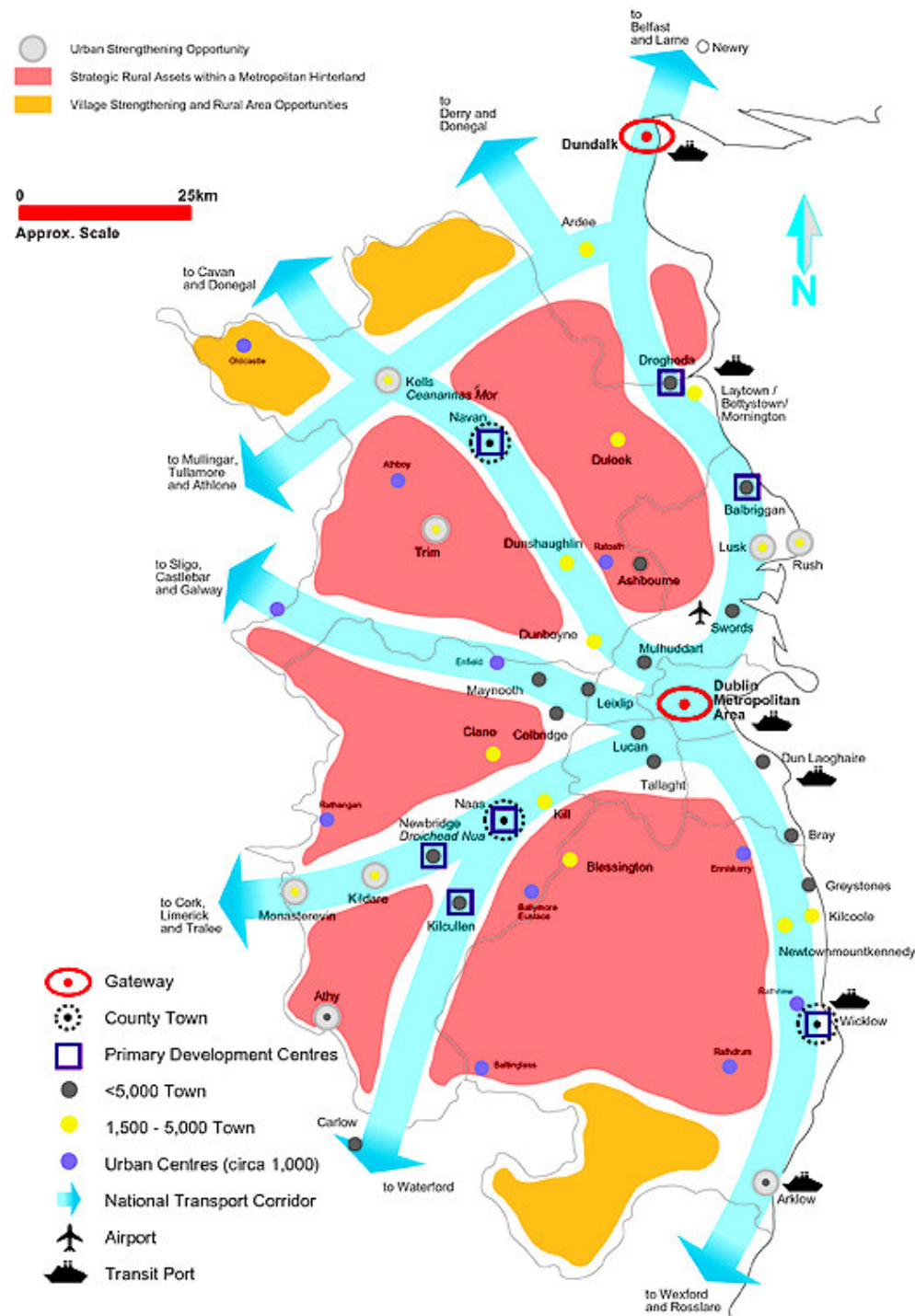
- **Rural and Urban partnership in balanced development..**
- **Strengthening rural communities..**
- **Protecting environmental qualities..**
- **Rural Settlement:**
 - **Accommodating the needs of rural communities..**
 - **Areas close to cities/main towns..**
 - **Building up the village structure..**
 - **Areas with a weaker urban structure..**

The background is a composite image. On the left, there is a faint, grayscale profile of a woman's head. In the center, a lush green tree stands in a field. On the right, a large Euro coin is visible, featuring the number '1' and the European Union flag. A solid green horizontal bar is positioned at the top of the slide.

The National Spatial Strategy and The Greater Dublin Area

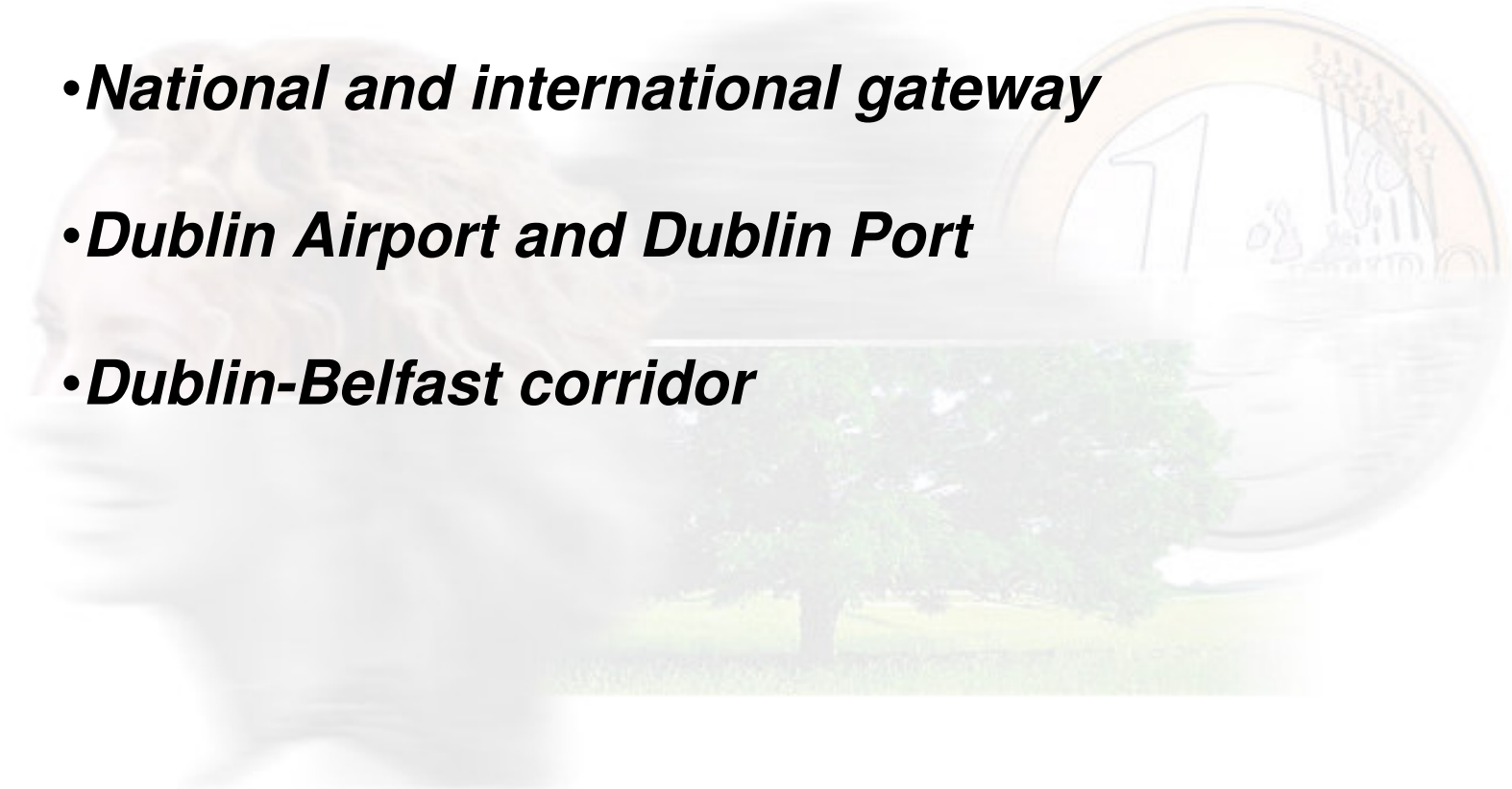


Dublin and Mid East



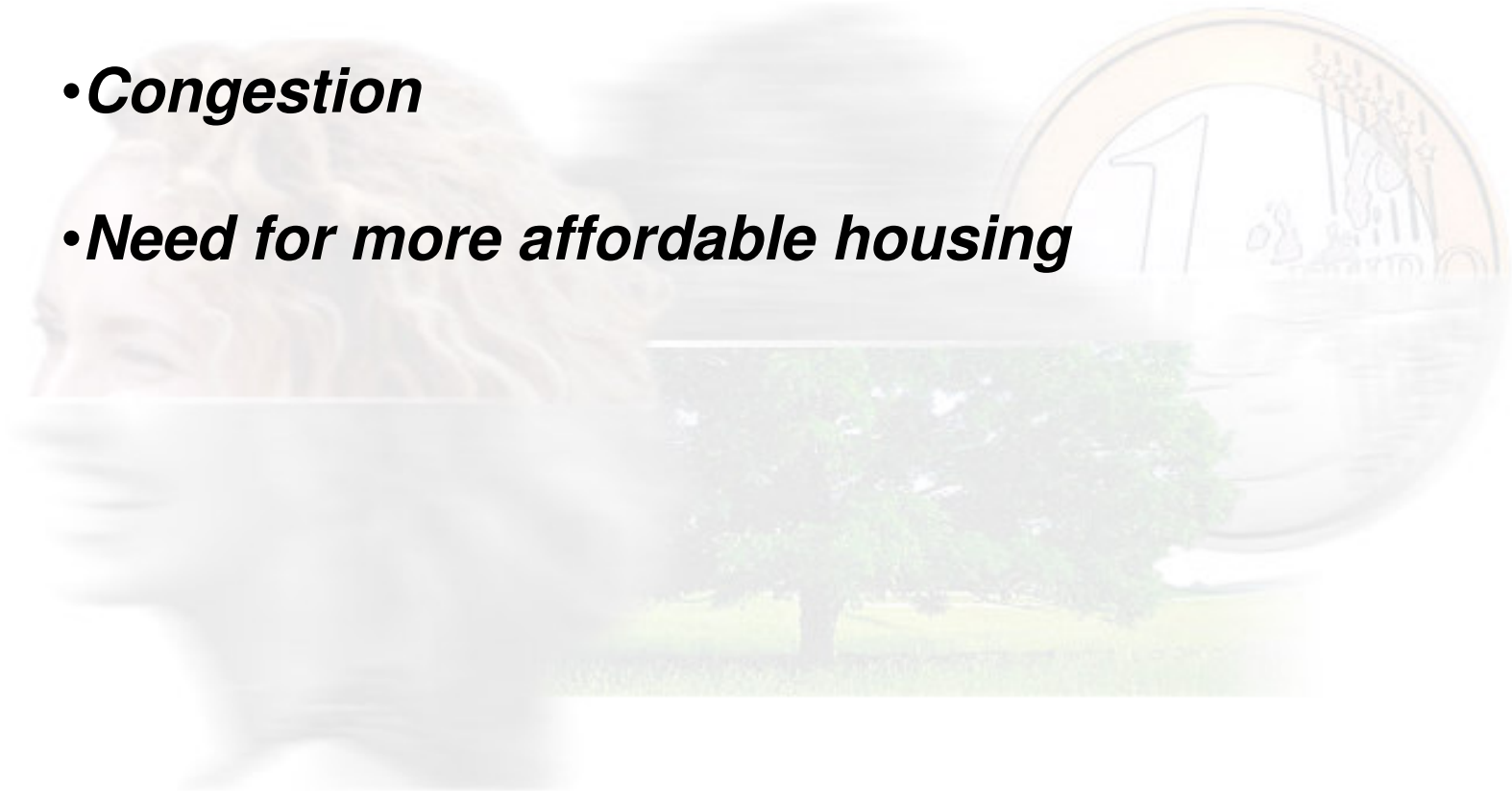
NSS and the Greater Dublin Area....

- *Performance of the GDA is pivotal*
- *National and international gateway*
- *Dublin Airport and Dublin Port*
- *Dublin-Belfast corridor*



NSS and the Greater Dublin Area....

- *Dispersed City*
- *Congestion*
- *Need for more affordable housing*



NSS and the Greater Dublin Area....

- ***Balanced development means more economic activity in the Regions***
- ***GDA will continue to grow***
- ***Consolidation essential, especially for public transport***

NSS and the Greater Dublin Area

- **The NSS supports core policies of the Strategic Planning Guidelines:**

- **>Distinction between Metropolitan and Hinterland Areas**
- **>Role of Primary Development Centres in the Hinterland**
- **>Integration of landuse and transport planning**

NSS and the Greater Dublin Area

- **Primary Development Centres in the Hinterland need to take account of gateways and hubs in adjoining Regions**
- **Self-contained towns with capacity for growth on well-served public transport corridors**
- **Integrated landuse/transport plans**



**The National Spatial Strategy -
Implementation and
Communication**

Implementation....

- **Minister for Environment and Local Government..**
- **Regional Planning Guidelines..**
- **Gateways and Hubs..**
- **Integration into other policies and programmes..**
- **Mid Term Review of NDP..**
- **Within one year..**
- **Within five years..**

Dublin and Mid East

